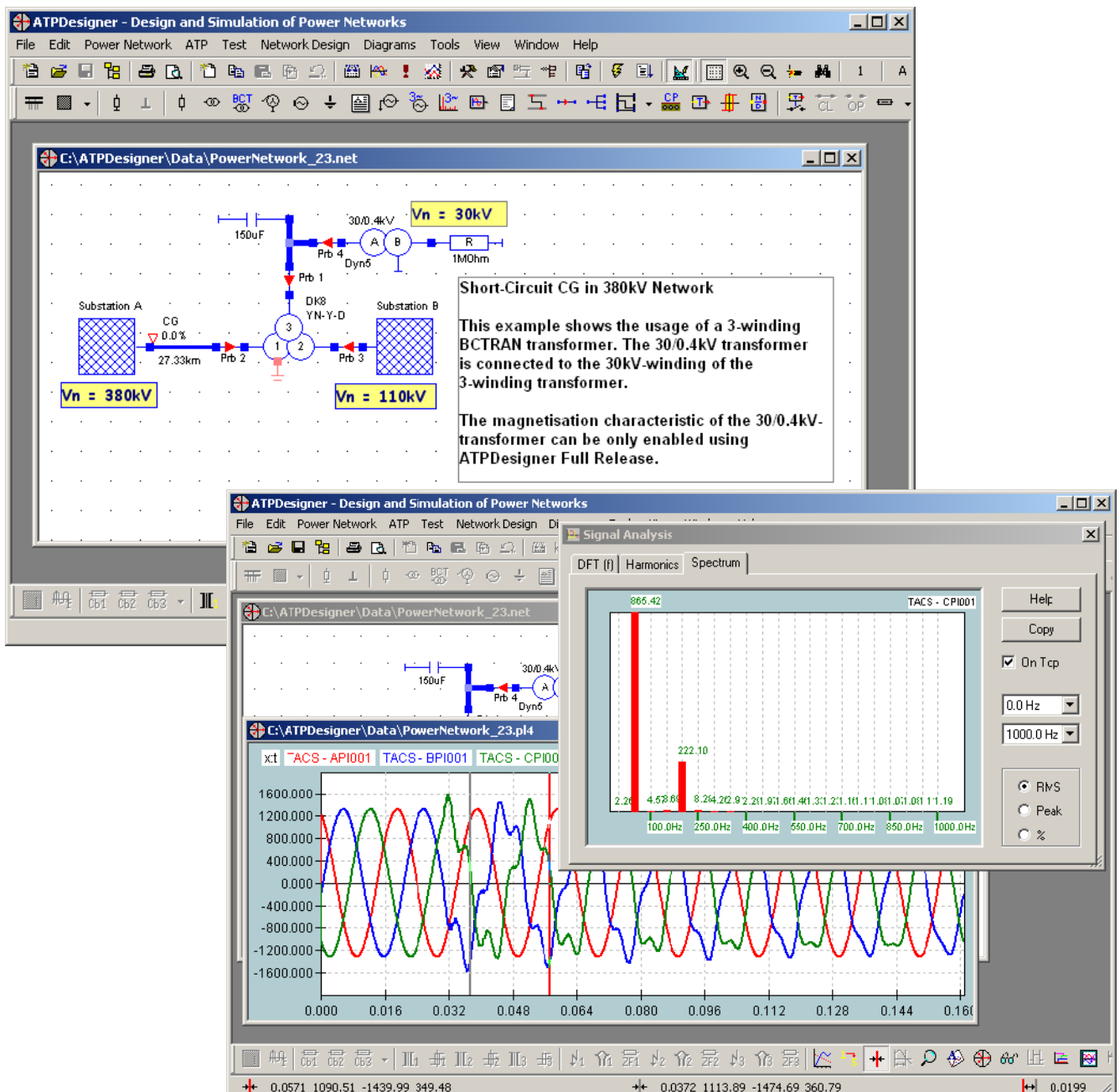


ATPDESIGNER - DESIGN AND SIMULATION OF ELECTRICAL POWER NETWORKS

Setup ATPDesigner



Internet: www.atpdesigner.de

Setup ATPDesigner

ATPDesigner will be installed using a pre-configured setup software. The setup consists only of one executable file, which shows the version information at the end of the file name.

§ Example:

SetupATPDesigner_V1.7.74.exe : ATPDesigner full release version 1.7.74

§ Example:

SetupATPDesignerL_V1.7.58.exe : ATPDesigner evaluation release version 1.7.58

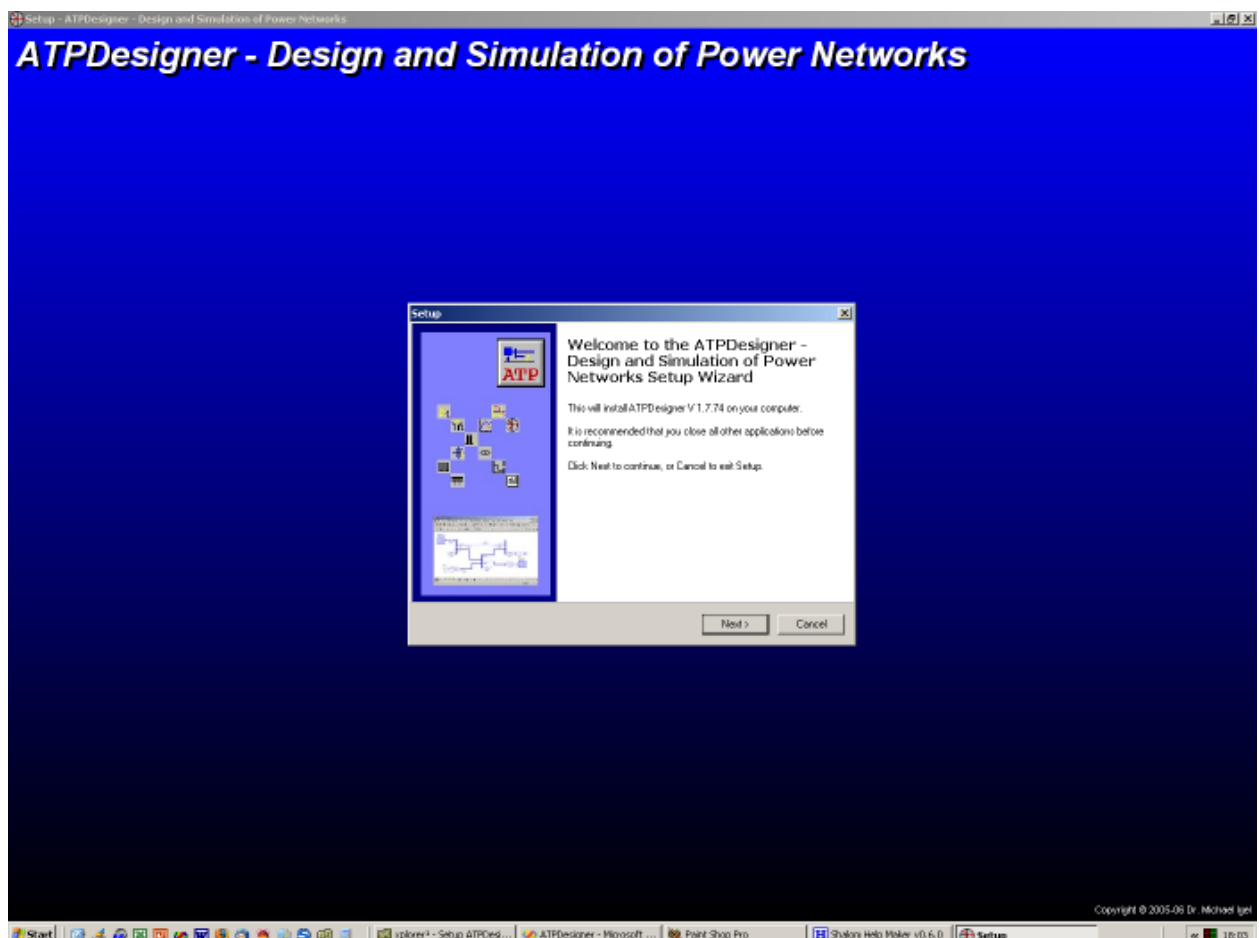
1. Please download first the executable setup software from ATPDesigner's Home Page.
2. Start the executable file and follow the instructions.
3. Read carefully the License Agreement and the Readme information.
4. It will be recommended to accept all pre-configured settings of the setup.

Required Disk Space

ATPDesigner needs about 30MByte hard disk space. The setup procedure doesn't check if enough hard disk space is available. Therefore be carefully, if you are not sure to have enough free hard disk space.

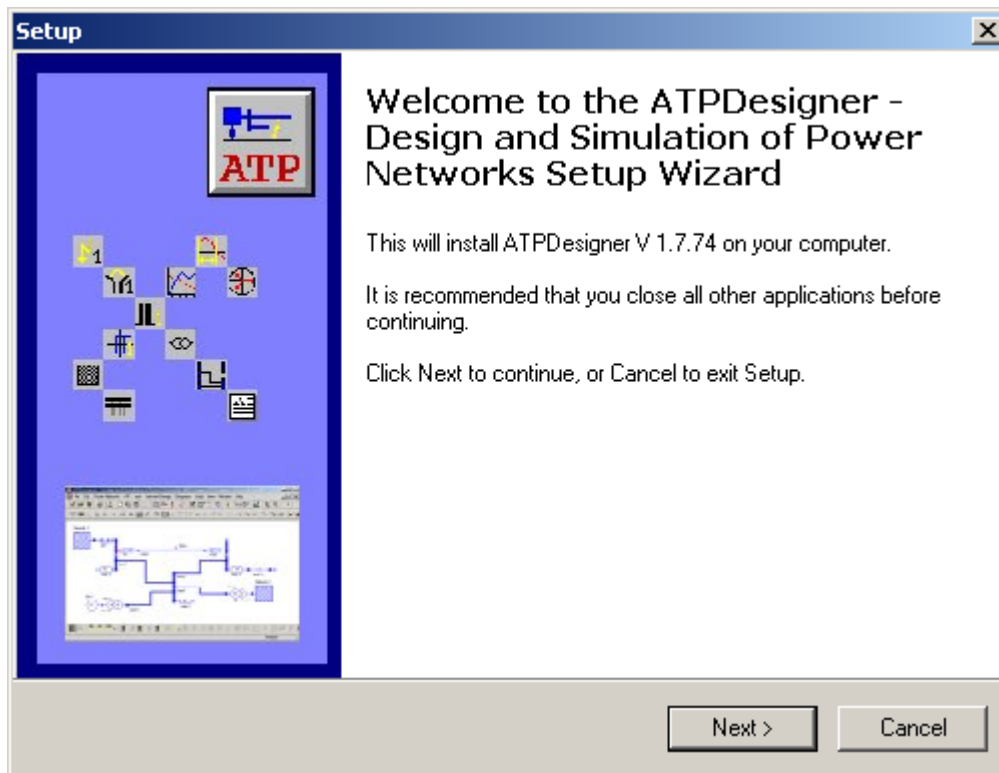
Processing the Setup Procedure

Start the setup program and follow the instructions displayed in the dialogs. The setup procedure is pre-configured and it is recommended not to modify the pre-defined settings e.g. folders etc. The figure below shows the background screen and the first dialog of the setup procedure.

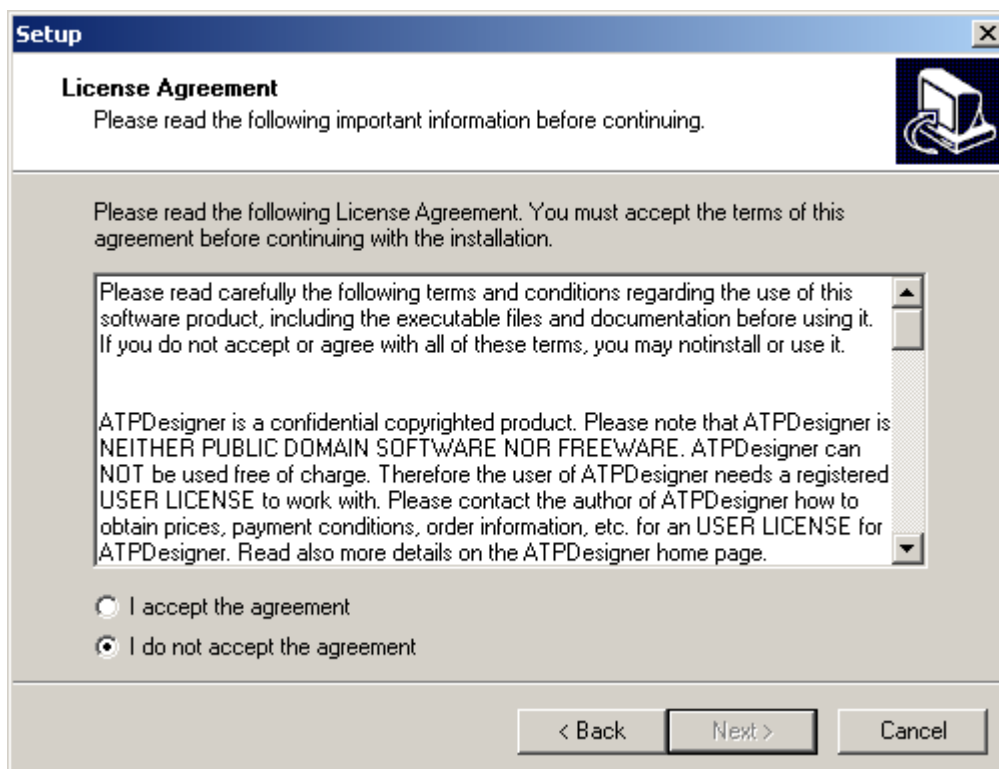


Caution !!!

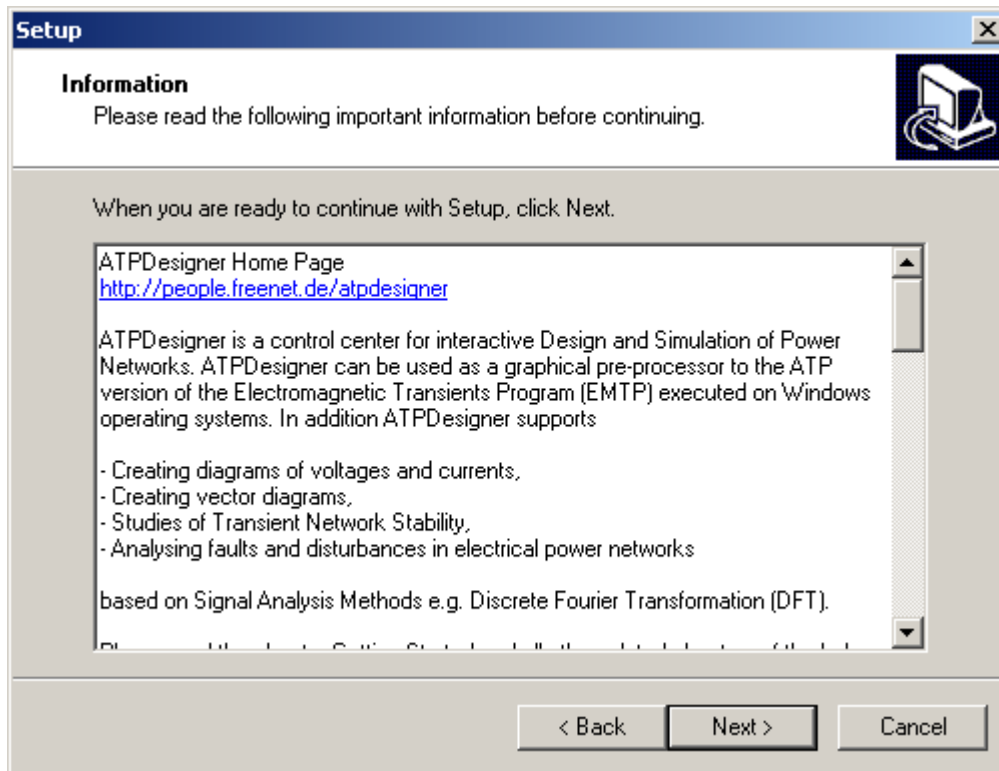
If one or more of the pre-defined settings e.g. folders had been changed during the setup procedure, the settings of the settings dialog **Program Settings** must be also changed adapted. The settings dialog **Program Settings** can be found in the main menu **TOOLS**.



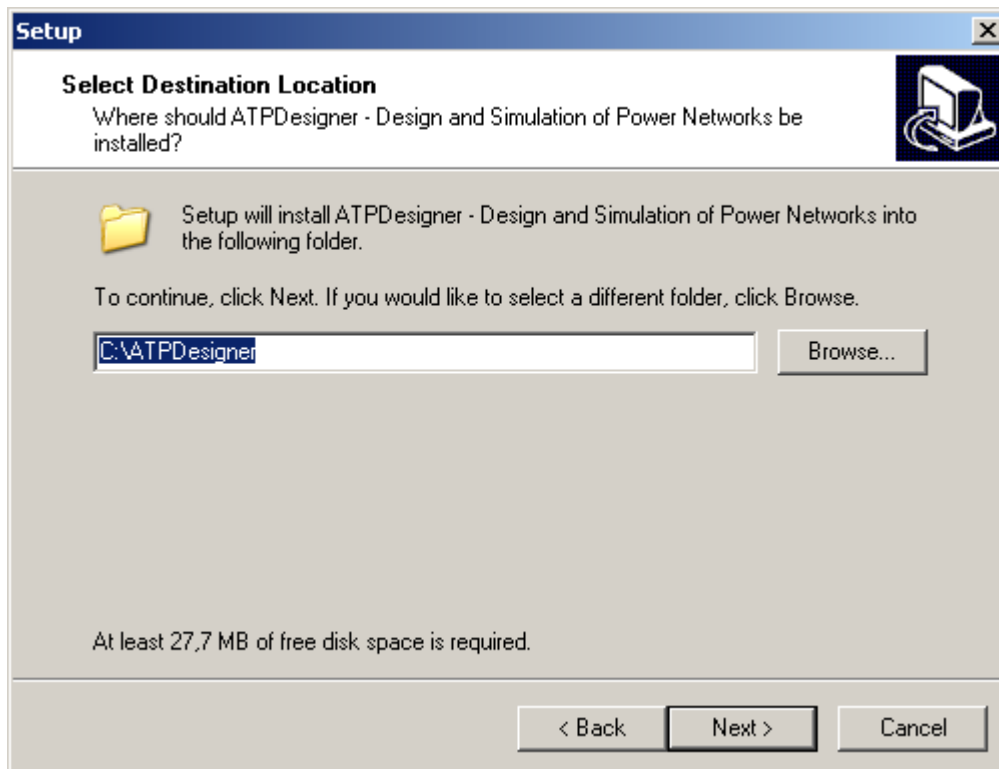
Please read carefully the **License Agreement** and the Information.



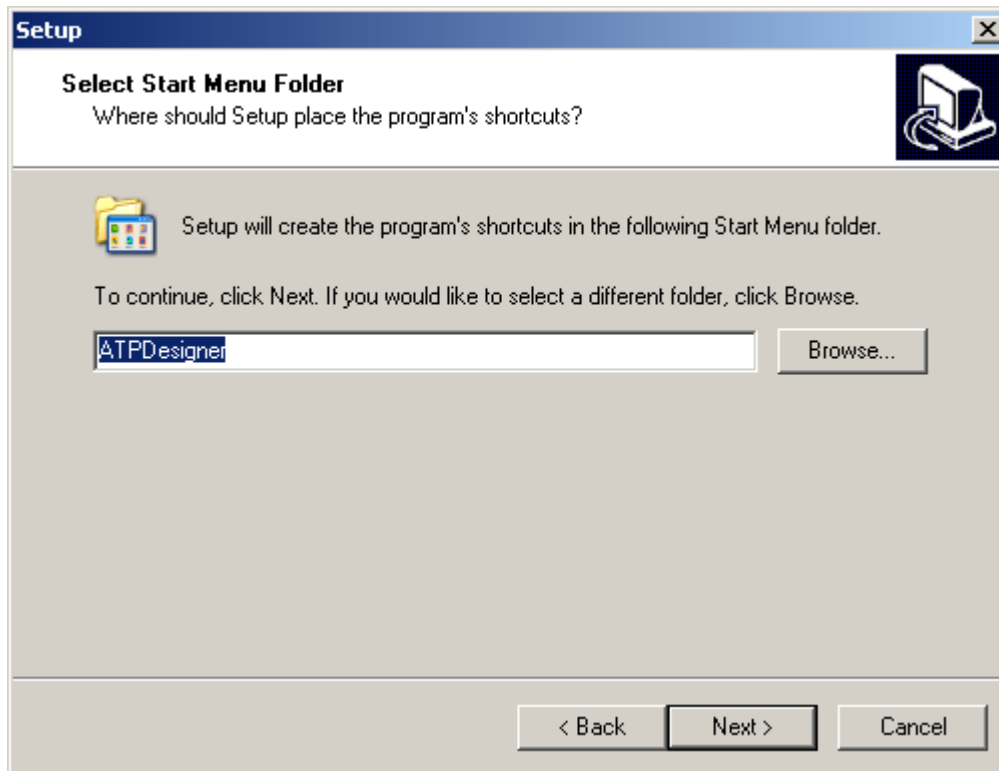
If you agree the license agreement, press **I accept the agreement** and **Next >**. If you disagree, please stop the setup software pressing the **I do not accept the agreement** and the **Cancel** button.



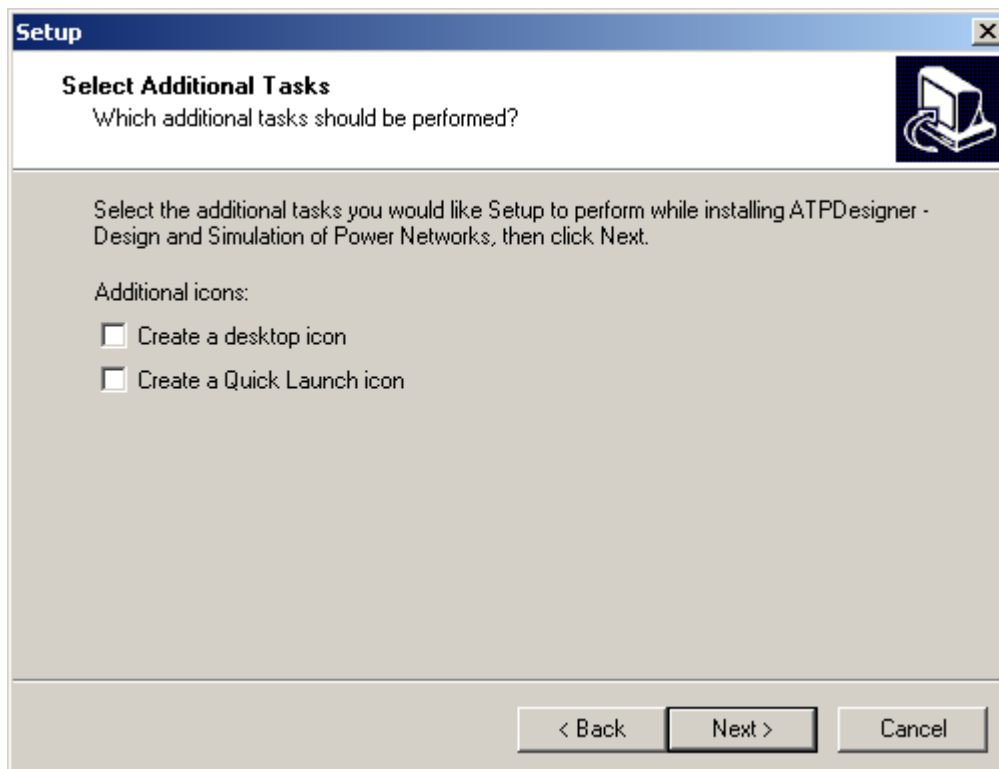
The user can now select the root folder for the following installation procedure.



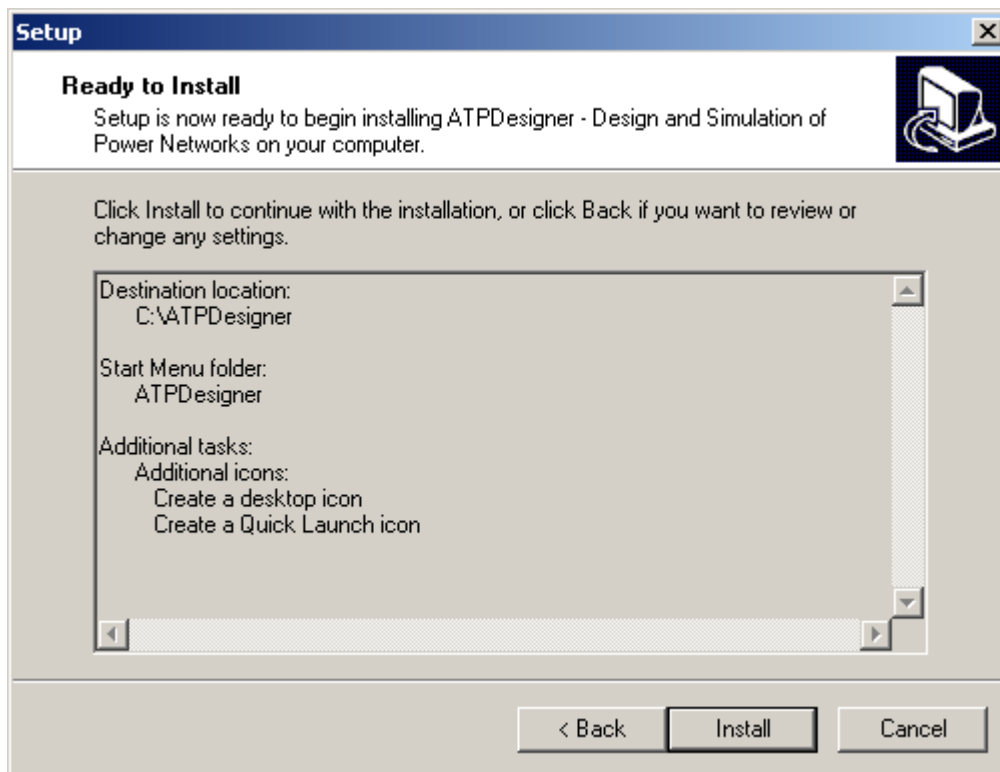
Before the setup software will install the new ATPDesigner release, the setup software will present some options.



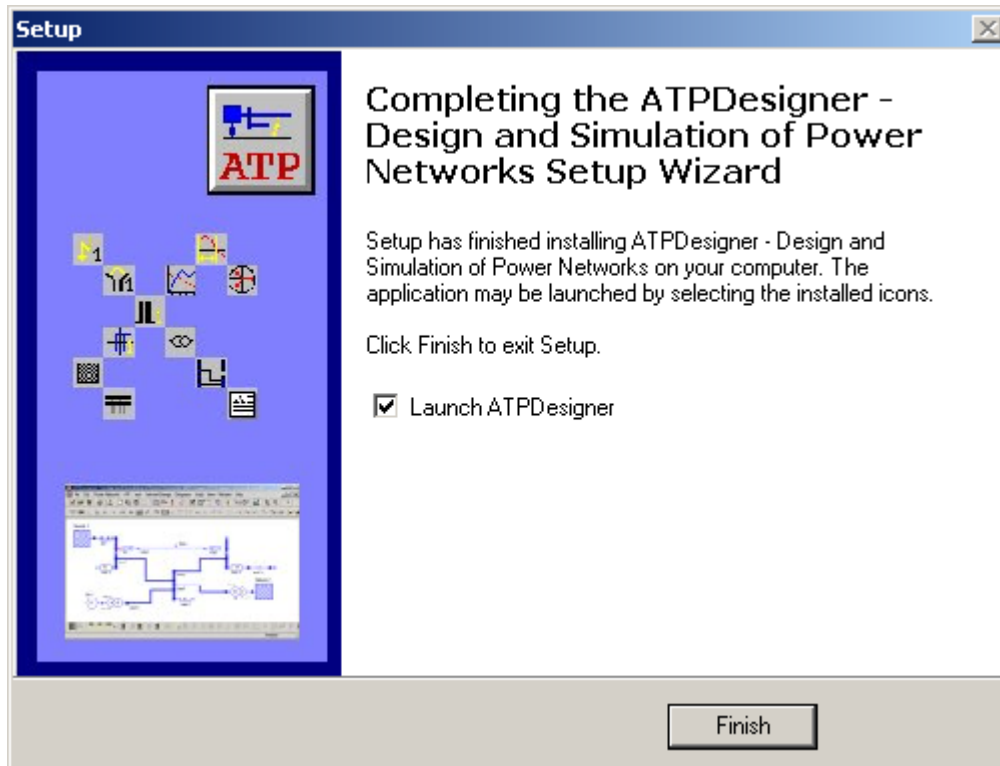
Additional icons on the **Desktop** or in the **Quick Launch Bar** can be created.



Now the compilation of all options.

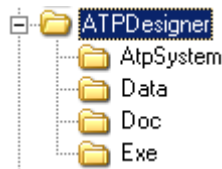


The setup procedure had been successfully finalised.



Default Folders for ATPDesigner and ATP

After the setup procedure had been successfully finalised the default folders are now available. Please note, that the pre-configured setup procedure will create the **main folder ATPDesigner** in the root of the hard disk C. The main folder ATPDesigner had been created in the root folder of the hard disk. The preferred hard disk is C:. Three subfolders had been also created:



How to Copy the ATP Runtime System in the Subfolder ATPSYSTEM

AtpSystem

The subfolder ATPSystem shall contain the ATP Runtime System. Several ATP Runtime Systems are existing worldwide in parallel depending on the ATP users groups e.g. EEUG and depending on the year of the distribution. Therefore the number and names of the files, which should be copied into the subfolder ATPSYSTEM are not really clear to specify.

Additional ATP Tools and External ATP File

Some Additional ATP Tools e.g. WINDSYN or ELINEQ shall be also copied to this folder because these executable files can be started out of ATPDesigner and the .ATP - Files created with these tools can be included using the network element External ATP File.

Below two examples for two different ATP Runtime Systems:

EEUG GNU-MING W32 - Release 2004

The files listed below should be copied into the subfolder AtpSystem

> TPBIGG.EXE
> STARTUP

MINGW32 - Release June 2004

The files listed below should be copied into the subfolder AtpSystem

> TPBIG.EXE
> STARTUP

Please note

§ In older releases the ATP executable file (.EXE) had been called different.

§ In older releases it may necessary to copy also the file BLOCKD51.BIN into the subfolder AtpSystem.

Independent of the ATP runtime system, the Name of the ATP Executable File e.g. TPBIG.EXE must be set by the user in the settings dialog **Program Settings**. The complete file name of the ATP executable file consists of NAME and EXTENSION. ATPDesigner uses this information to create the command line to start the ATP executable file:

ATPSystemExec.File DISK .ATP-File Name .LST-File Name

Example:

C:\AtpDesigner\TPBIGG.EXE DISK C:\AtpDesigner\Data\Network_1.ATP C:\AtpDesigner\Data\Network_1.LST

ATPDesigner creates the command line invisible for the user and executes ATP in the background as a temporary Windows thread. The .PL4 - File will be automatically created by ATP using the file name of the .LST - File but with the extension .PL4.

Subfolders Exe, Data, Doc

Exe

The subfolder **Exe** contains the runtime system of ATPDesigner including the ATPDesigner help file.

For the evaluation version ATPDesignerL:

- ATPDESIGNERL.EXE
- ATPDESIGNER.HLP

An .INI - File called ATPDESIGNERL.INI will be automatically created during the first startup.

For the full version ATPDesigner:

- ATPDESIGNER.EXE
- ATPDESIGNER.HLP
- KEYLIB32.DLL

An .INI - File will be automatically created, if ATPDesigner will be started for the first time.

See mor about Exe

Data

ATPDesigner and ATPDesignerL use the subfolder **Data** as the default working folder.

- § ATPDesigner stores the .ATP - Files in this folder.
- § ATP reads the .ATP - Files out of this folder and stores the .LST - Files and the .PL4 - Files there.
- § ATP stores also a lot of temporary files in this folder, which can be easily deleted using ATPDesigners Integrated File Browser.

Doc

The subfolder **Doc** contains various PDF - files with detailed information about ATPDesigner and its use.

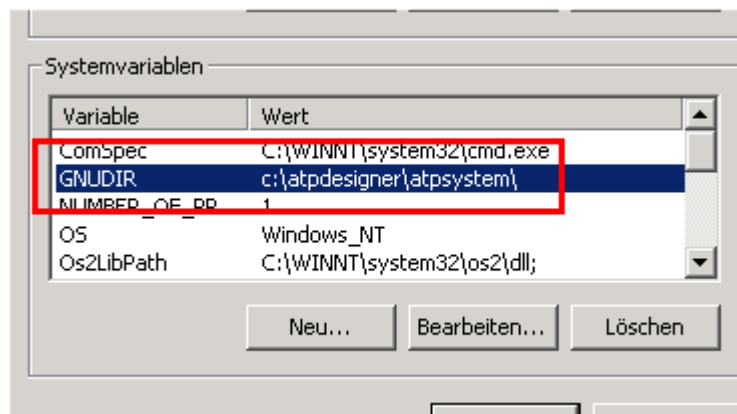
Environment Variable GNUDIR

Since ATPDesigner release V 1.3.0

It is not further necessary to assign the environment variable **GNUDIR** to the ATPDesigner folder ATPSYSTEM (see Program Settings) e.g. "c:\atpdesigner\atpsystem" via the Windows System Panels. ATPDesigner assigns automatically the environment variable GNUDIR to the folder where ATPSYSTEM points to, but only as long as ATPDesigner is running.

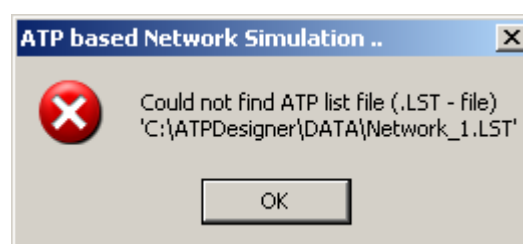
Up to ATPDesigner release 1.2.x

Please don't forget to adapt the environment variable GNUDIR to the path where the ATP Run Time System had been stored. The ATP executable file e.g. TPBIG.EXE requires this environment variable to load the STARTUP file. If you didn't change the pre-configured setup procedure you should set the environment variable GNUDIR as follows:



If you forgot to adapt the environment variable GNUDIR, ATPDesigner will create the error message shown below after starting the first simulation process.

The explanation below is also included in the chapter Error Messages.



ATPDesigner tries to start the exe file TPBIGG.EXE (ATP main module). This file is stored in the ATP System folder and therefore could be find from ATPDesigner. But ATP could not work properly because the environment variable GNUDIR points not to this directory.

> The environment variable GNUDIR should be reassigned to the ATP System folder.